



# Stuckey Timberland, Inc.

555 HAWKINSVILLE HIGHWAY  
P.O. BOX 577  
EASTMAN, GEORGIA 31023-0577  
(478) 374-4776  
[www.stuckeytimberland.com](http://www.stuckeytimberland.com)

February 7, 2018

Dear Sir,

Stuckey Timberland, Inc. is soliciting bids on a **second thinning** on the following described property: A stand of timber containing 118 acres, more or less, lying and being a part of the tract or parcel of land containing 175 acres, more or less, in Land Lots 100 of the 15th Land District Dodge County, Georgia. Attached is a tract map showing the exact location of the timber for sale.

We have made an estimate of the volumes for removal. Our estimate of the volume is:

Pine Pulpwood:	30 Tons/Acre x 118 Acres = 3,540 Tons
Pine CNS:	5 Tons/Acre x 118 Acres = 590 Tons

Timber Stand Attributes are the following:

Current TPA = 235. Current BA = 125

Residual TPA = Approx 150. Residual BA = Approx 75

Logging operations shall be completed in accordance with the Best Management Practices as shown in the Georgia Forestry Commission publications "Recommended Best Management Practices for Forestry in Georgia" and "Best Management Practices for Forested Wetlands in Georgia". All roads and fences must be maintained and restored to original condition when logging is completed. Tops must be kept out of the Restricted Areas. A period of time of 12 months from closing will be allowed to remove the timber.

Said timber will be sold **Per Unit**. Owner reserves the right to reject any or all bids. Bids will not be disclosed. Bids should be mailed, FAXED (478-374-2048), called in, emailed ([ken@stuckeytimberland.com](mailto:ken@stuckeytimberland.com)), or taken by: Stuckey Timberland, Inc., P.O. Box 577, 555 Hawkinsville Highway, Eastman, Georgia 31023. Bids must be received at this address not later than **11:00 a.m. on Wednesday, February 14, 2018**. The successful bidder will be required to enter into a written contract within 30 days of bid opening. A copy of the contract to be used is available upon request. An advance of 30% will be required if operations do not commence by March 15.

If you have questions concerning this sale, please contact me at 478-374-4776 or 478-290-7500.

Sincerely,  
Stuckey Timberland, Inc.

Ken Eason





# Stuckey Timberland, Inc.

555 HAWKINSVILLE HIGHWAY  
P. O. BOX 577  
EASTMAN, GEORGIA 31023-0577  
(478) 374-4776  
[www.stuckeytimberland.com](http://www.stuckeytimberland.com)

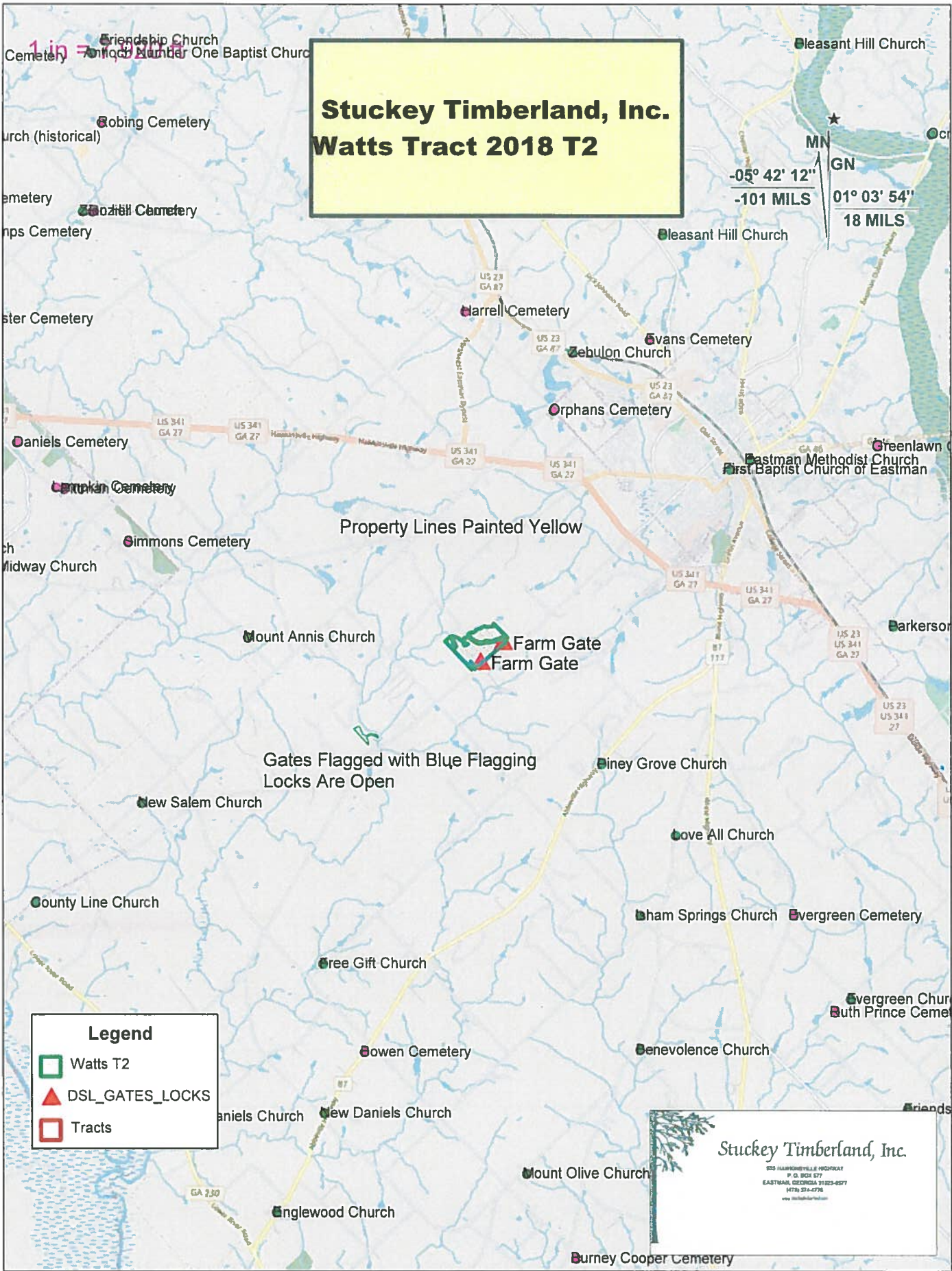
## Stuckey Timberland, Inc Per Unit Timber Sale Bid Form

Company:	
Date:	
Tract:	
Proposed Start Date:	
Proposed Logger:	

Product	Value/Ton	Specs		
	\$\$	Butt	Top	Min Length
Pine Pulpwood - Topwood				
Pine Pulpwood - Tree Length				
Pine CNS				

Signed:

# Stuckey Timberland, Inc. Watts Tract 2018 T2



1 in = 1/8 mile

$-05^{\circ} 42' 12''$   
 $-101$  MILS  
 $01^{\circ} 03' 54''$   
 $18$  MILS

Property Lines Painted Yellow

Farm Gate  
Farm Gate

Gates Flagged with Blue Flagging  
Locks Are Open

**Legend**

- Watts T2
- ▲ DSL\_GATES\_LOCKS
- Tracts

**Stuckey Timberland, Inc.**  
 625 HAMPDENVILLE HIGHWAY  
 P. O. BOX 577  
 EASTMAN, GEORGIA 31023-0577  
 478-374-4776  
 www.stuckeytimberland.com



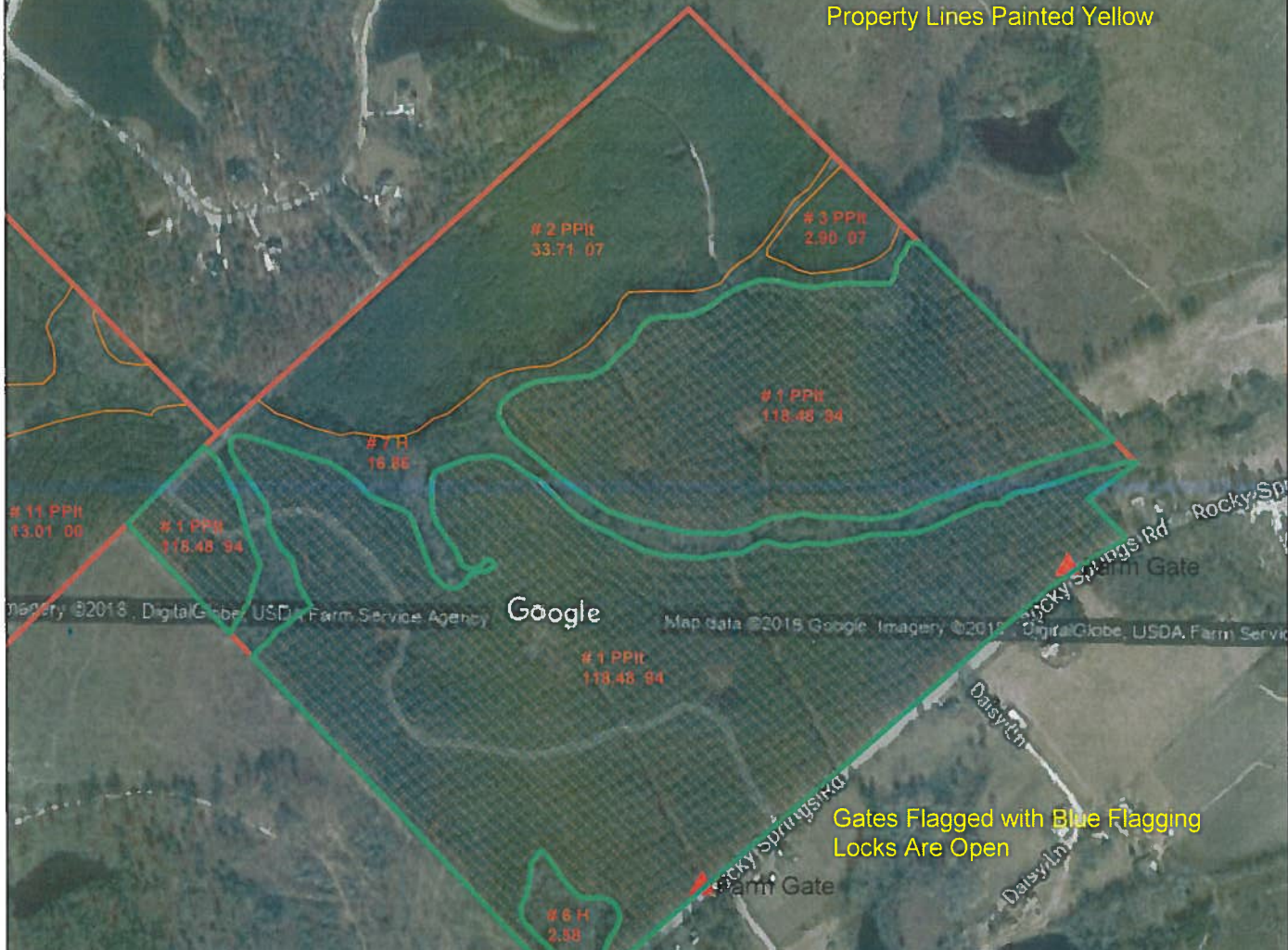
1 in = 660 ft

# Stuckey Timberland, Inc. Watts Tract 2018 T2

Imagery ©2018, DigitalGlobe, USDA Farm Service Agency



Property Lines Painted Yellow



Gates Flagged with Blue Flagging  
Locks Are Open

**Legend**

- Watts T2
- ▲ DSL\_GATES\_LOCKS
- Tracts

**Stuckey Timberland, Inc.**  
 833 HARRISONVILLE HIGHWAY  
 P. O. BOX 577  
 EASTMAN, GEORGIA 31023-0577  
 (478) 294-4776  
 www.stuckeytimberland.com

