



# Stuckey Timberland, Inc.

555 HAWKINSVILLE HIGHWAY  
P.O. BOX 577  
EASTMAN, GEORGIA 31023-0577  
(478) 374-4776  
[www.stuckeytimberland.com](http://www.stuckeytimberland.com)

January 29, 2018

Dear Sir,

Stuckey Timberland, Inc. is soliciting bids on all merchantable timber on the following described property: A stand of timber containing 135 acres, more or less, lying and being a part of the tract or parcel of land containing 752 acres, more or less, in Land Lots 182 of the 13th Land District Dodge County, Georgia. Attached is a tract map showing the exact location of the timber for sale.

We have made an estimate of the volumes. Our estimate of the volume is:

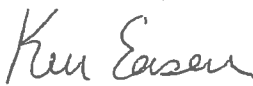
Pine Pulpwood:	3,957 Tons (includes top wood)
Pine CNS:	7,074 Tons
Pine Sawtimber:	318 Tons
Hardwood Pulpwood:	32 Tons

Since our reputation is at stake, we tallied the number of trees with utmost care and estimated their volume in accordance with the most prevalent scaling practice in the area. Further, we have GPS'd and painted the sale boundaries to represent accurate acres. However, the actual volumes may vary depending on the utilization of each bidder. Logging operations shall be completed in accordance with the Best Management Practices as shown in the Georgia Forestry Commission publications "Recommended Best Management Practices for Forestry in Georgia" and "Best Management Practices for Forested Wetlands in Georgia". All roads and fences must be maintained and restored to original condition when logging is completed. Tops must be kept out of the Restricted Areas. *(There will be a combination lock placed on the gates needed for access. # 4776).* A period of time of 12 months from closing will be allowed to remove the timber.

Said timber will be sold **LUMP SUM SEALED BIDS**. Owner reserves the right to reject any or all bids. Bids should be mailed, FAXED (478-374-2048), called in, emailed ([ken@stuckeytimberland.com](mailto:ken@stuckeytimberland.com)), or taken by: Stuckey Timberland, Inc., P.O. Box 577, 555 Hawkinsville Highway, Eastman, Georgia 31023. Bids must be received at this address not later than **1:00 p.m. on Thursday, February 22, 2018**. The successful bidder will be required to enter into a written contract within 30 days of bid opening. A copy of the contract to be used is available upon request. The total payment will be required at the time of closing.

If you have questions concerning this sale, please contact me at 478-374-4776 or 478-290-7500.

Sincerely,  
Stuckey Timberland, Inc.

  
Ken Eason

1 in = 3,520 ft

Stuckey Timberland, Inc.  
Union Camp Tract, Stand 27 135.53 Acres  
Bid Opening: 1 PM 2/22/2018

MN  
GN  
-05° 50' 11"  
-103 MILS  
01° 03' 55"  
18 MILS

SMZ's Painted Blue  
Property Lines Painted Yellow

McMurray Road

Farm Gate

Farm Gate

Woods Road Is Sale Boundary  
Painted Blue

Chapman Dublin Highway

165

165

77  
N, P  
80  
LB  
90  
LB  
91

**Legend**

- DSL\_GATES\_LOCKS
- ▣ UC 2018 ST 27
- ▣ Tracts
- ▣ Stands

Stuckey Timberland, Inc.

263 HANCOCKVILLE HIGHWAY  
P. O. BOX 577  
EASTMAN, GEORGIA 31225-0577  
678.374.4775  
www.stuckeytimberland.com

2 km

2 mi



1 in = 660 ft

Stuckey Timberland, Inc.  
Union Camp Tract, Stand 31  
135.53 Acres  
Bid Opening: 1 pm 2/22/2018

★  
MN GN  
-05° 50' 13" 01° 03' 55"  
-103 MILS 18 MILS

SMZ's Painted in Blue  
Boundary Lines Painted in Yellow

ST#31  
92  
178.11

Farm Gate

ST#27  
LB92  
135.53

ST#27  
LB92  
135.53

ST#27  
LB92  
135.53

ST#31  
92  
178.11

Road Is Sale Boundary, Painted Blue

Farm Gate

ST#4  
P  
1.29

ST#27  
LB92  
135.53

ST#1  
P  
1.29

ST#31  
92  
178.11

ST#2  
LB18  
5.15

ST#4  
LB18  
12.15

ST#9  
LB96  
2.87

ST#11  
LB96  
2.87

ST#10  
H  
2.87

ST#4  
H  
107.29

ST#1  
92  
1.29





ST#13  
LB96  
4.88

ST#31  
92  
178.11

ST#3  
LB18  
5.15

ST#5  
SL10  
12.15

Legend

-  UC 2018 ST 27
-  DSL\_GATES\_LOCKS
-  Tracts
-  Stands

Stuckey Timberland, Inc.

885 HAWKINSVILLE HIGHWAY  
P. O. BOX 577  
EASTMAN, GEORGIA 31023-0577  
(478) 324-4075  
www.stuckeytimberland.com

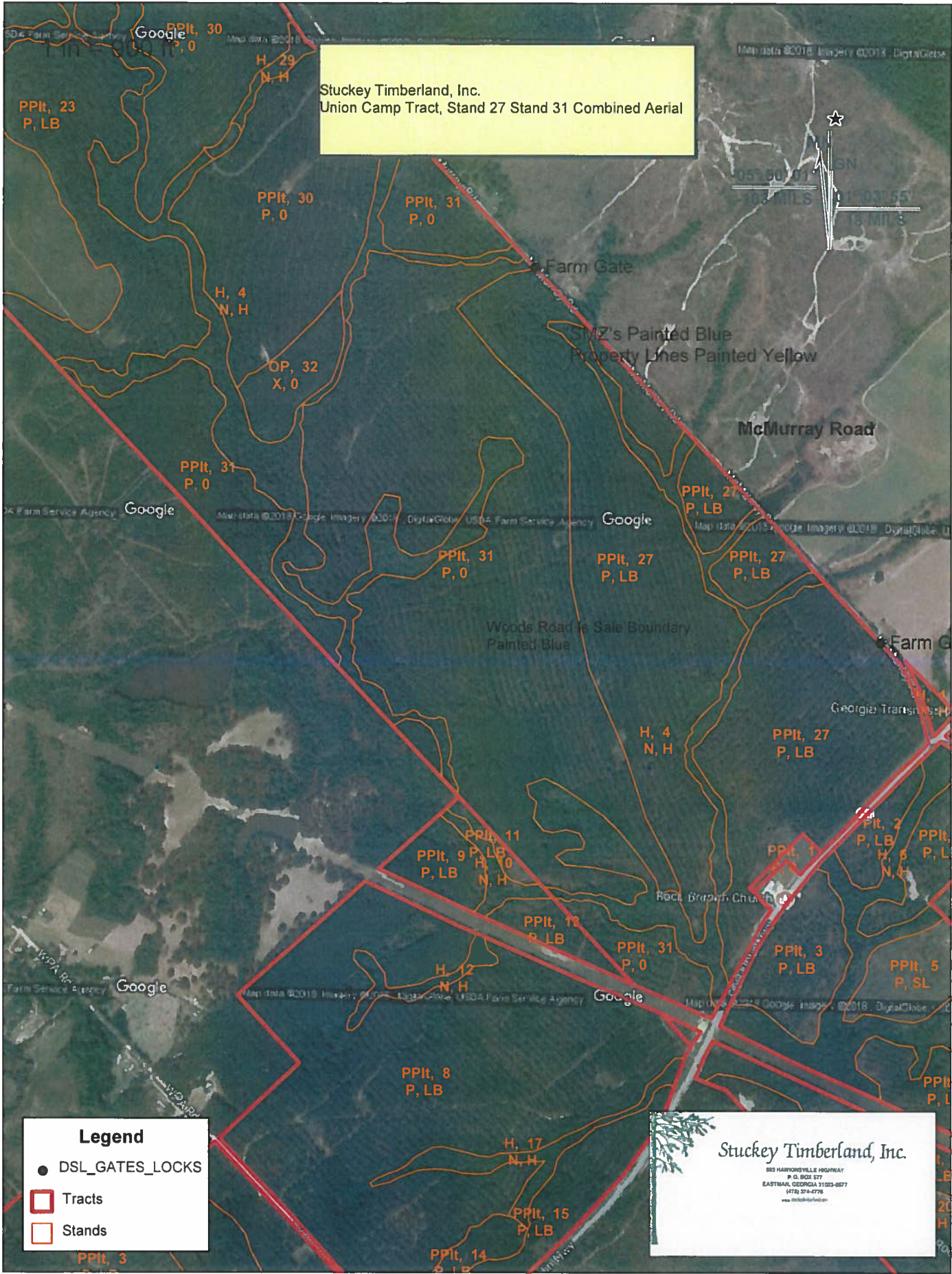
500 m

2000 ft



Stuckey Timberland, Inc.  
 Union Camp Tract, Stand 27 Stand 31 Combined Aerial

Map data ©2016 Imagery ©2016 DigitalGlobe  
 35° 50' 01" N  
 83° 03' 55" W  
 10.3 MILS  
 18 MILS



**Legend**

- DSL\_GATES\_LOCKS
- ▭ Tracts
- ▭ Stands

**Stuckey Timberland, Inc.**  
 883 HARRISONVILLE HIGHWAY  
 P. O. BOX 577  
 EASTMAN, GEORGIA 31025-0577  
 (478) 214-4776  
 www.stuckeytimber.com