



Stuckey Timberland, Inc.

555 HAWKINSVILLE HIGHWAY
P.O. BOX 577
EASTMAN, GEORGIA 31023-0577
(478) 374-4776
www.stuckeytimberland.com

October 10, 2017

Dear Sir or Madam,

Stuckey Timberland, Inc. is soliciting bids on all merchantable timber on the following described property: A stand of timber containing 261.7 acres, more or less, lying and being a part of the tract or parcel of land containing 1,094.18 acres, also known as Map 241 Parcels 2 in Laurens County, Georgia. Attached is a tract map showing the exact location of the timber for sale.

We have made an estimate of the volumes. Our estimate of the volume is:

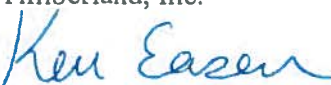
Pine Pulpwood:	6,385 Tons (includes top wood)
Pine CNS:	11,346 Tons
Pine Sawtimber:	1,313 Tons
Hardwood Pulpwood:	1,374 Tons

Since our reputation is at stake, we tallied the number of trees with utmost care and estimated their volume in accordance with the most prevalent scaling practice in the area. However, the actual volumes may vary depending on the utilization of each bidder. Logging operations shall be completed in accordance with the Best Management Practices as shown in the Georgia Forestry Commission publications "Recommended Best Management Practices for Forestry in Georgia" and "Best Management Practices for Forested Wetlands in Georgia". All roads and fences must be maintained and restored to original condition when logging is completed. Tops must be kept out of the Restricted Areas. *(There will be a combination lock placed on the gates needed for access. # 4776).* A period of time until December 10, 2018 will be allowed to cut and remove the timber.

Said timber will be sold **LUMP SUM SEALED BIDS**. Owner reserves the right to reject any or all bids. Bids should be mailed, FAXED (478-374-2048), called in or taken by: Stuckey Timberland, Inc., P.O. Box 577, 555 Hawkinsville Highway, Eastman, Georgia 31023. Bids must be received at this address not later than **10:00 a.m. on Thursday, November 9, 2017**. The successful bidder will be required to enter into a written contract within 30 days of bid opening. A copy of the contract to be used is available upon request. The total payment will be required at the time of closing.

If you have questions concerning this sale, please contact me at 478-374-4776 or 478-290-7500 or ken@stuckeytimberland.com.

Sincerely,
Stuckey Timberland, Inc.



Ken Eason

Basal Area 93.58
 Vol/Acre = 75.0
 TPA = 204

SBC
 241.5 Acres
 Location Laurens

NUMBER OF MERCHANTABLE TREES BY DBH AND LOG LENGTHS
 PULPWOOD

DBH	PINE			HARDWOOD			TOTALS	
	TREES	VOLUME	BA/Acre	TREES	VOLUME	BA	TREES	VOLUMES
6	9840	831.5	8.00	639	73.5	0.52	10479	905.0
8	15548	3933.6	22.47	439	108.9	0.63	15987	4042.5
10	319	145.6	0.72	259	121.0	0.58	578	266.6
12	180	130.7	0.59	160	116.0	0.52	340	246.7
14	20	20.8	0.09	200	277.5	0.89	220	298.3
TOT	25907	5062.2	31.87	1697	696.8	3.14	27604	5759.0

DBH	SAWTIMBER					SAWTIMBER			SAWTIMBER			SAWTIMBER		
	PINE		OAK			GUM			MISC					
	1	2	3	4	5	1	2	3	1	2	3	1	2	3
10	120	4491	9680	0	0	0	0	0	0	0	0	0	0	0
12	299	778	5109	0	0	0	0	0	0	0	0	0	0	0
14	80	299	699	0	0	0	0	0	0	0	0	0	0	0
16	0	80	60	0	0	0	0	0	0	0	0	0	0	0
18	0	0	40	0	0	0	0	0	0	0	0	0	0	0
20	0	0	0	0	0	0	0	0	0	0	0	0	0	0
22	0	0	0	0	0	0	0	0	0	0	0	0	0	0
24	0	0	0	0	0	0	0	0	0	0	0	0	0	0
26	0	0	20	0	0	0	0	0	0	0	0	0	0	0
28	0	0	0	0	0	0	0	0	0	0	0	0	0	0
30	0	0	0	0	0	0	0	0	0	0	0	0	0	0

DBH	SAWTIMBER				SAWTIMBER				SAWTIMBER			
	PINE TREES	*VOL	BA	OAK TREES	*VOL	BA	GUM TREES	*VOL	BA	MISC TREES	*VOL	BA
10	14291	6731.2	32.27	0	0.0	0.00	0	0.0	0.00	0	0.0	0.00
12	6186	4329.0	20.12	0	0.0	0.00	0	0.0	0.00	0	0.0	0.00
14	1078	1003.4	4.77	0	0.0	0.00	0	0.0	0.00	0	0.0	0.00
16	140	167.3	0.81	0	0.0	0.00	0	0.0	0.00	0	0.0	0.00
18	40	66.2	0.29	0	0.0	0.00	0	0.0	0.00	0	0.0	0.00
20	0	0.0	0.00	0	0.0	0.00	0	0.0	0.00	0	0.0	0.00
22	0	0.0	0.00	0	0.0	0.00	0	0.0	0.00	0	0.0	0.00
24	0	0.0	0.00	0	0.0	0.00	0	0.0	0.00	0	0.0	0.00
26	20	59.2	0.31	0	0.0	0.00	0	0.0	0.00	0	0.0	0.00
28	0	0.0	0.00	0	0.0	0.00	0	0.0	0.00	0	0.0	0.00
30	0	0.0	0.00	0	0.0	0.00	0	0.0	0.00	0	0.0	0.00
TOT	21755	12356.2	58.57	0	0.0	0.00	0	0.0	0.00	0	0.0	0.00

*PINE VOLUME IS SHOWN IN TONS TO A 4 INCH TOP D.O.B.

*HARDWOOD VOLUME IS SHOWN IN THOUSANDS OF BOARD FEET, DOYLE SCALE

Basal Area 64.47
 Vol/Acre = 54.8
 TPA = 149

SBC
 20.2 Acres
 Location Laurens

NUMBER OF MERCHANTABLE TREES BY DBH AND LOG LENGTHS
 PULPWOOD

DBH	PINE			HARDWOOD			TOTALS	
	TREES	VOLUME	BA/Acre	TREES	VOLUME	BA	TREES	VOLUMES
6	606	51.2	5.89	522	60.0	5.07	1128	111.2
8	303	76.7	5.24	387	96.0	6.69	690	172.6
10	0	0.0	0.00	303	141.5	8.18	303	141.5
12	0	0.0	0.00	168	121.8	6.53	168	121.8
14	0	0.0	0.00	186	258.1	9.84	186	258.1
TOT	909	127.9	11.13	1566	677.4	36.32	2475	805.2

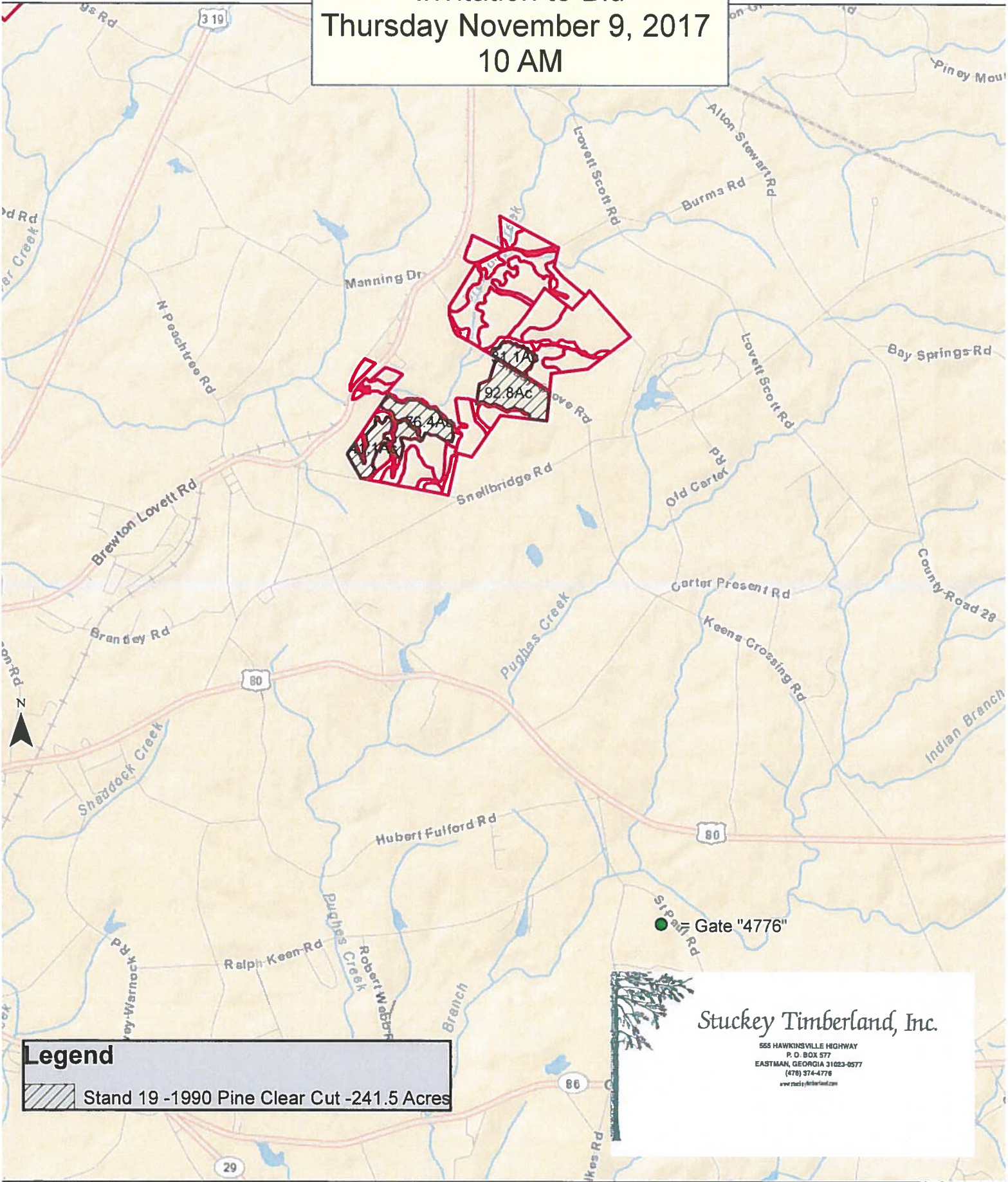
DBH	SAWTIMBER					SAWTIMBER								
	PINE		OAK			GUM			MISC					
	1	2	3	4	5	1	2	3	1	2	3	1	2	3
10	0	118	236	0	0	0	0	0	0	0	0	0	0	0
12	0	34	135	0	0	0	0	0	0	0	0	0	0	0
14	0	0	17	0	0	0	0	0	0	0	0	0	0	0
16	0	0	0	0	0	0	0	0	0	0	0	0	0	0
18	0	0	0	0	0	0	0	0	0	0	0	0	0	0
20	0	0	0	0	0	0	0	0	0	0	0	0	0	0
22	0	0	0	0	0	0	0	0	0	0	0	0	0	0
24	0	0	0	0	0	0	0	0	0	0	0	0	0	0
26	0	0	0	0	0	0	0	0	0	0	0	0	0	0
28	0	0	0	0	0	0	0	0	0	0	0	0	0	0
30	0	0	0	0	0	0	0	0	0	0	0	0	0	0

DBH	SAWTIMBER			SAWTIMBER								
	PINE TREES	*VOL	BA	OAK TREES	*VOL	BA	GUM TREES	*VOL	BA	MISC TREES	*VOL	BA
10	354	166.7	9.56									
12	169	118.7	6.57	0	0.0	0.00	0	0.0	0.00	0	0.0	0.00
14	17	16.9	0.90	0	0.0	0.00	0	0.0	0.00	0	0.0	0.00
16	0	0.0	0.00	0	0.0	0.00	0	0.0	0.00	0	0.0	0.00
18	0	0.0	0.00	0	0.0	0.00	0	0.0	0.00	0	0.0	0.00
20	0	0.0	0.00	0	0.0	0.00	0	0.0	0.00	0	0.0	0.00
22	0	0.0	0.00	0	0.0	0.00	0	0.0	0.00	0	0.0	0.00
24	0	0.0	0.00	0	0.0	0.00	0	0.0	0.00	0	0.0	0.00
26	0	0.0	0.00	0	0.0	0.00	0	0.0	0.00	0	0.0	0.00
28	0	0.0	0.00	0	0.0	0.00	0	0.0	0.00	0	0.0	0.00
30	0	0.0	0.00	0	0.0	0.00	0	0.0	0.00	0	0.0	0.00
TOT	540	302.2	17.03	0	0.0	0.00	0	0.0	0.00	0	0.0	0.00

*PINE VOLUME IS SHOWN IN TONS TO A 4 INCH TOP D.O.B.

*HARDWOOD VOLUME IS SHOWN IN THOUSANDS OF BOARD FEET, DOYLE SCALE

Stuckey Timberland, Inc.
SBC Tract
Invitation to Bid
Thursday November 9, 2017
10 AM



Legend
Stand 19 -1990 Pine Clear Cut -241.5 Acres

Stuckey Timberland, Inc.
655 HAWKINSVILLE HIGHWAY
P. O. BOX 577
EASTMAN, GEORGIA 31023-0577
(478) 374-4776
www.stuckeytimberland.com

0 2,950 5,900 11,800 Feet

1:60,000

Stuckey Timberland, Inc.
SBC Tract
Invitation to Bid
Thursday November 9, 2017
10 AM

SE Cut Bounded by Marked Branch Run

Yellow Painted Boundary Line

Blue Paint SMZ

Mid Rotation Plantation

● = Gate "4776"

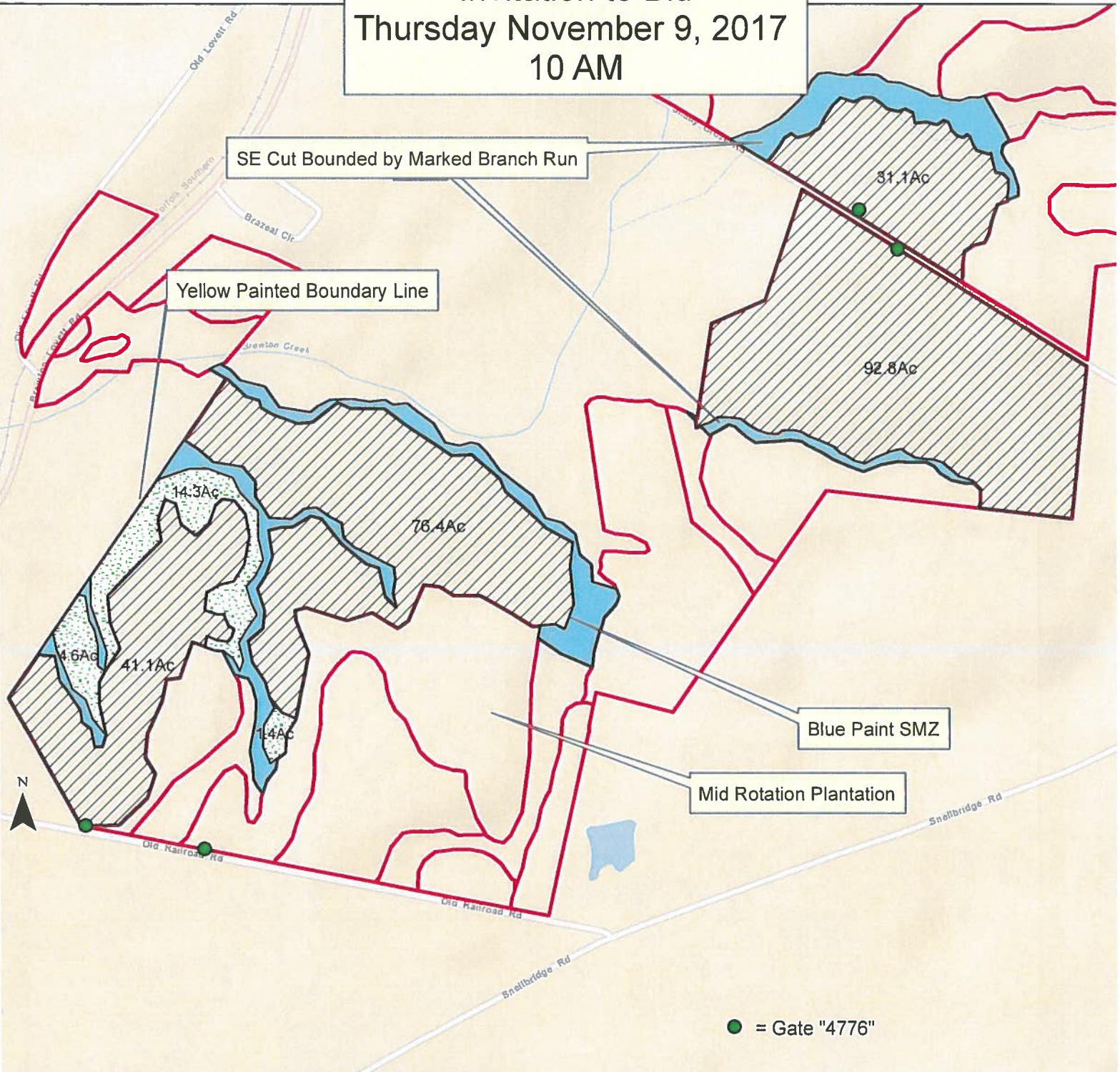
Legend
[Hatched Box] Stand 19 -1990 Pine Clear Cut -241.5 Acres

Stuckey Timberland, Inc.
655 HAWKINSVILLE HIGHWAY
P. O. BOX 577
EASTMAN, GEORGIA 31023-0577
(478) 374-4776
www.stuckeytimberland.com

0 625 1,250 2,500 Feet

1:12,500

Stuckey Timberland, Inc.
 SBC Tract
 Invitation to Bid
 Thursday November 9, 2017
 10 AM



Legend	
	Stand 19 -1990 Pine Clear Cut -241.5 Acres
	Stand 21 - SMZ Selection - Pine Only - BMPs
	Stand 27 -HW CC - 20.2 Acres

Stuckey Timberland, Inc.
 655 HAWKINSVILLE HIGHWAY
 P. O. BOX 577
 EASTMAN, GEORGIA 31023-0577
 (478) 374-4776
 www.stuckeytimberland.com

0 625 1,250 2,500 Feet

1:12,500