



# Stuckey Timberland, Inc.

**555 HAWKINSVILLE HIGHWAY  
P.O. BOX 577  
EASTMAN, GEORGIA 31023-0577  
(478) 374-4776  
[www.stuckeytimberland.com](http://www.stuckeytimberland.com)**

January 14, 2019

Dear Sir,

Stuckey Timberland, Inc. is soliciting bids on all merchantable timber on the following described property: A stand of timber containing 143.5 acres, more or less, lying and being a part of the tract or parcel of land containing 2,174 acres, more or less, listed as Map 050, Parcel 73 in Dodge County, Georgia. Attached is a tract map showing the exact location of the timber for sale.

We have made an estimate of the volumes. Our estimate of the volume is:

Pine Pulpwood:	2,565 Tons (includes top wood)
Pine CNS:	7,688 Tons
Pine Sawtimber:	4,634 Tons
Poles:	113 Tons

Since our reputation is at stake, we tallied the number of trees with utmost care and estimated their volume in accordance with the most prevalent scaling practice in the area. Further, we have GPS'd and painted the sale boundaries to represent accurate acres. However, the actual volumes may vary depending on the utilization of each bidder. Logging operations shall be completed in accordance with the Best Management Practices as shown in the Georgia Forestry Commission publications "Recommended Best Management Practices for Forestry in Georgia" and "Best Management Practices for Forested Wetlands in Georgia". All roads and fences must be maintained and restored to original condition when logging is completed. Tops must be kept out of the Restricted Areas. *(There will be a combination lock placed on the gates needed for access. # 4776).* A period of time of 12 months from closing will be allowed to remove the timber.

Said timber will be sold **LUMP SUM SEALED BIDS**. Owner reserves the right to reject any or all bids. Bids should be mailed, FAXED (478-374-2048), called in, emailed ([ken@stuckeytimberland.com](mailto:ken@stuckeytimberland.com)), or taken by: Stuckey Timberland, Inc., P.O. Box 577, 555 Hawkinsville Highway, Eastman, Georgia 31023. Bids must be received at this address not later than **10:00 a.m. on Thursday, February 7, 2019**. The successful bidder will be required to enter into a written contract within 30 days of bid opening. A copy of the contract to be used is available upon request. The total payment will be required at the time of closing.

If you have questions concerning this sale, please contact me at 478-374-4776 or 478-290-7500.

Sincerely,  
Stuckey Timberland, Inc.

  
Ken Eason



**16' Log Merchantable Height Stand Table Report**

**Pine**

**Pulpwood**

Dbh	<u>Conversion Factors</u>											Tot	<u>Total Tract</u>			
	0.5	1	1.5	2	2.5	3	3.5	4	4.5	5	5.5+		Tons	Cords	DMBF	Cunits
5				84								84	8	3	0	2
6					127							127	20	7	0	6
7						485						485	113	40	0	33
8						42	1,055					1,097	357	128	0	103
9							295	21				316	138	49	0	40
10								338				338	188	67	0	54
11								338				338	235	84	0	68
12								21	274			295	250	89	0	72
13									105			105	108	38	0	31
14										63		63	76	27	0	22
15											42	42	59	21	0	17
<b>9.0</b>				84	127	527	1,350	717	485			3,291	1,552	554	0	449
<b>Pine Total</b>																
<b>11.2</b>	148	127	717	3,797	4,409	9,239	780	485			19,702	13,698	4,892	1,227	3,963	

**Pine Poles**

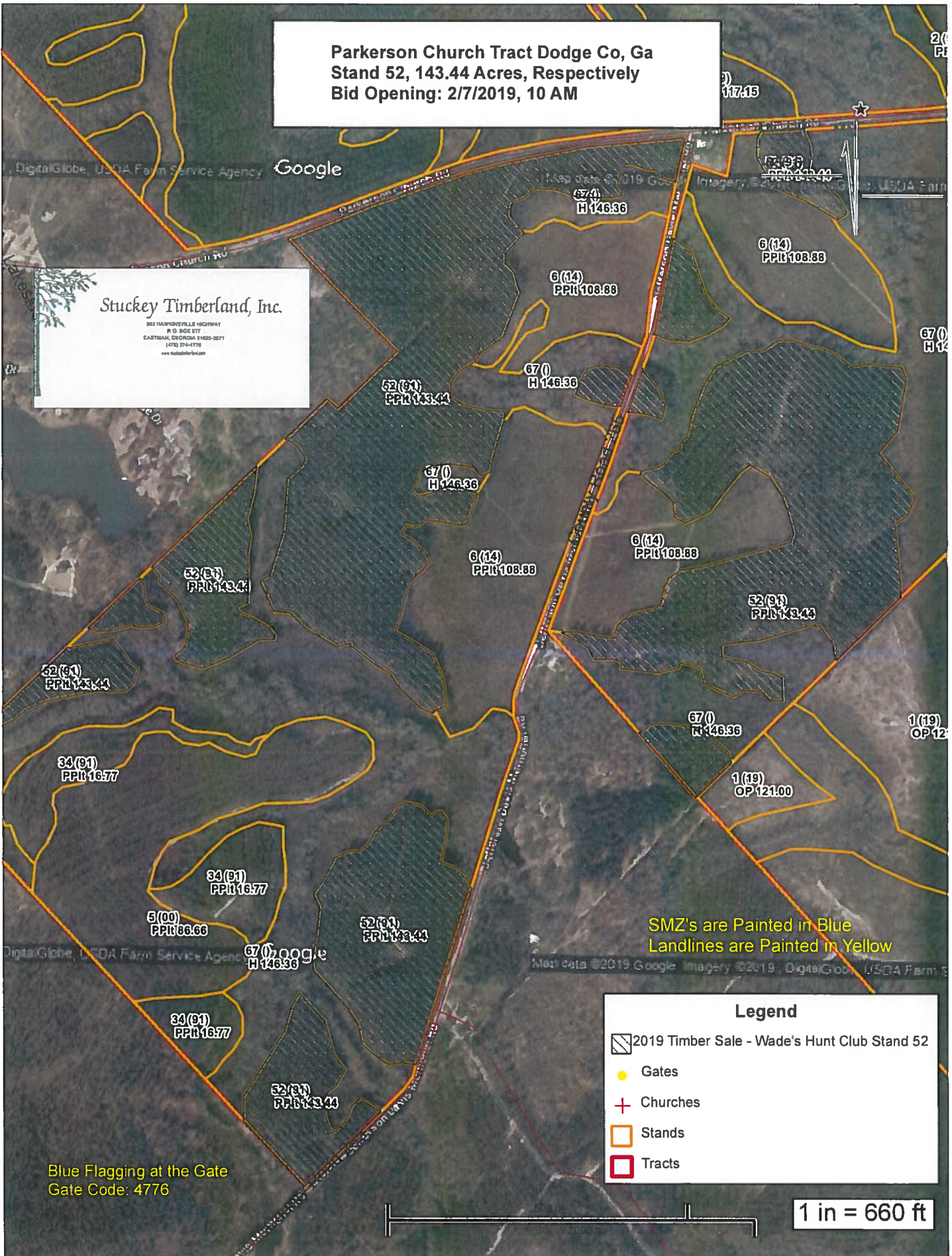
**Poles**

Dbh	<u>Conversion Factors</u>											Tot	<u>Total Tract</u>			
	0.5	1	1.5	2	2.5	3	3.5	4	4.5	5	5.5+		Tons	Cords	DMBF	Cunits
11						42						42	30	11	2	8
12					21	21						42	31	11	2	8
14						21						21	24	8	2	6
15						21						21	26	9	3	7
<b>12.5</b>					21	105						127	111	40	9	30
<b>Pine Poles Total</b>																
<b>12.5</b>					21	105						127	111	40	9	30



**Parkerson Church Tract Dodge Co, Ga  
Stand 52, 143.44 Acres, Respectively  
Bid Opening: 2/7/2019, 10 AM**

**Stuckey Timberland, Inc.**  
 843 HAWKINSVILLE HIGHWAY  
 P. O. BOX 877  
 EASTMAN, GEORGIA 31023-0877  
 478.274-4778  
 www.stuckeytimber.com



SMZ's are Painted in Blue  
 Landlines are Painted in Yellow

**Legend**

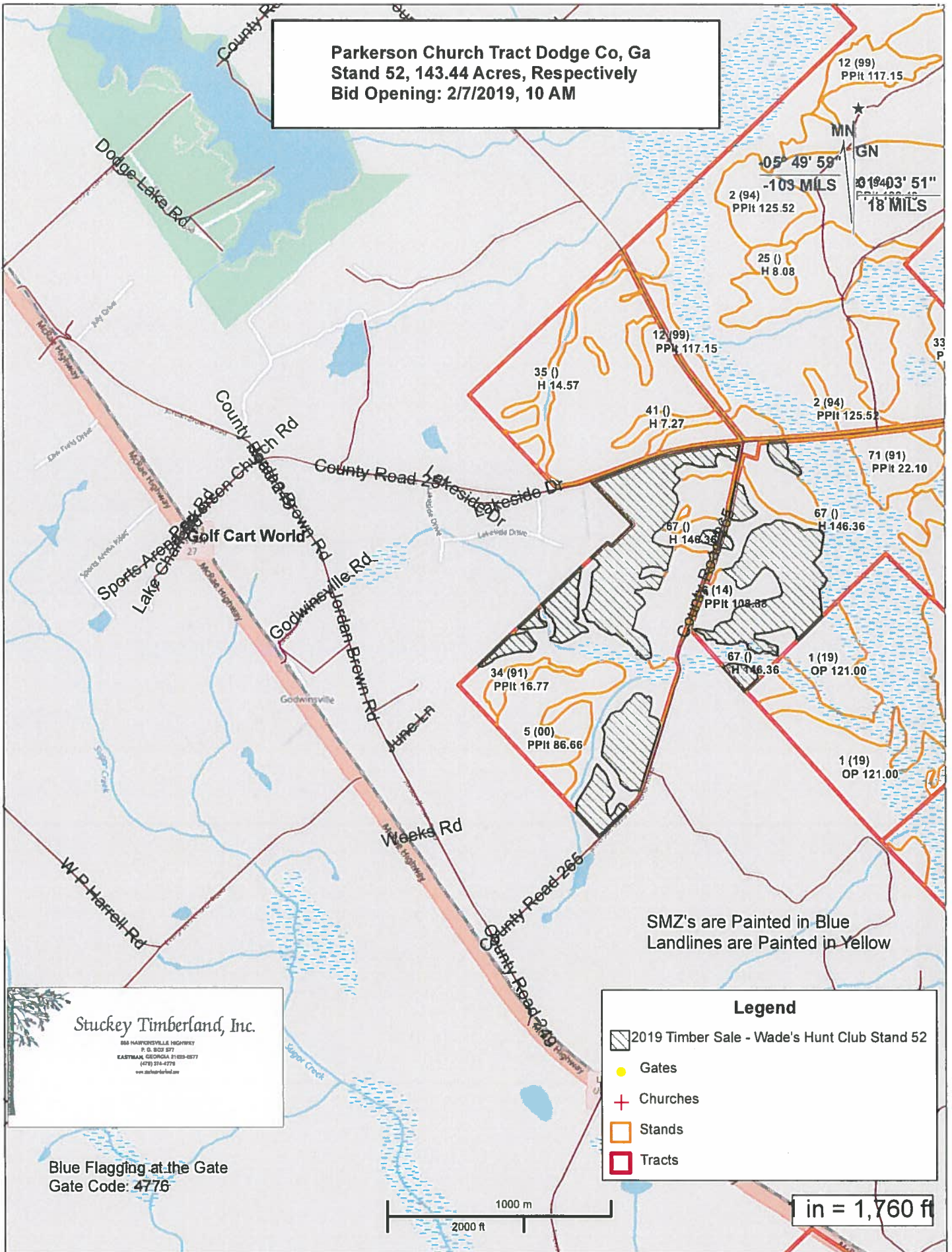
- 2019 Timber Sale - Wade's Hunt Club Stand 52
- Gates
- Churches
- Stands
- Tracts

Blue Flagging at the Gate  
 Gate Code: 4776

1 in = 660 ft



**Parkerson Church Tract Dodge Co, Ga  
Stand 52, 143.44 Acres, Respectively  
Bid Opening: 2/7/2019, 10 AM**



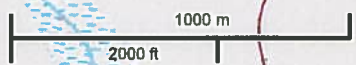
SMZ's are Painted in Blue  
Landlines are Painted in Yellow

**Stuckey Timberland, Inc.**  
888 HAINESVILLE HIGHWAY  
 P. O. BOX 577  
 EASTMAN, GEORGIA 31025-0577  
 (478) 214-4778  
 www.stuckeytimberland.com

**Legend**

- 2019 Timber Sale - Wade's Hunt Club Stand 52
- Gates
- Churches
- Stands
- Tracts

Blue Flagging at the Gate  
Gate Code: 4776



1 in = 1,760 ft



