



Stuckey Timberland, Inc.

555 HAWKINSVILLE HIGHWAY
P.O. BOX 577
EASTMAN, GEORGIA 31023-0577
(478) 374-4776
www.stuckeytimberland.com

April 9, 2018

Dear Sir,

Stuckey Timberland, Inc. is soliciting bids on all merchantable timber on the following described property: A stand of timber containing 43 acres, more or less, lying and being a part of the tract or parcel of land containing 324.18 acres, more or less, in Land Lots 135/136 of the 15th Land District Dodge County, Georgia. Attached is a tract map showing the exact location of the timber for sale.

We have made an estimate of the volumes. Our estimate of the volume is:

Pine Pulpwood:	643 Tons (includes top wood)
Pine CNS:	3,222 Tons
Pine Sawtimber:	1,243 Tons

Since our reputation is at stake, we tallied the number of trees with utmost care and estimated their volume in accordance with the most prevalent scaling practice in the area. Further, we have GIS'd and painted the sale boundaries to represent accurate acres. However, the actual volumes may vary depending on the utilization of each bidder. Logging operations shall be completed in accordance with the Best Management Practices as shown in the Georgia Forestry Commission publications "Recommended Best Management Practices for Forestry in Georgia" and "Best Management Practices for Forested Wetlands in Georgia". All roads and fences must be maintained and restored to original condition when logging is completed. Tops must be kept out of the Restricted Areas. *(There will be a combination lock placed on the gates needed for access. # 4776).* A period of time of 12 months from closing will be allowed to remove the timber.

Said timber will be sold **LUMP SUM SEALED BIDS**. Owner reserves the right to reject any or all bids. Bids should be mailed, FAXED (478-374-2048), called in, emailed (wade@stuckeytimberland.com), or taken by: Stuckey Timberland, Inc., P.O. Box 577, 555 Hawkinsville Highway, Eastman, Georgia 31023. Bids must be received at this address not later than **10:00 a.m. on Thursday, May 3, 2018**. The successful bidder will be required to enter into a written contract within 30 days of bid opening. A copy of the contract to be used is available upon request. The total payment will be required at the time of closing.

If you have questions concerning this sale, please contact me at 478-374-4776 or 478-290-7500.

Sincerely,
Stuckey Timberland, Inc.


Ken Eason

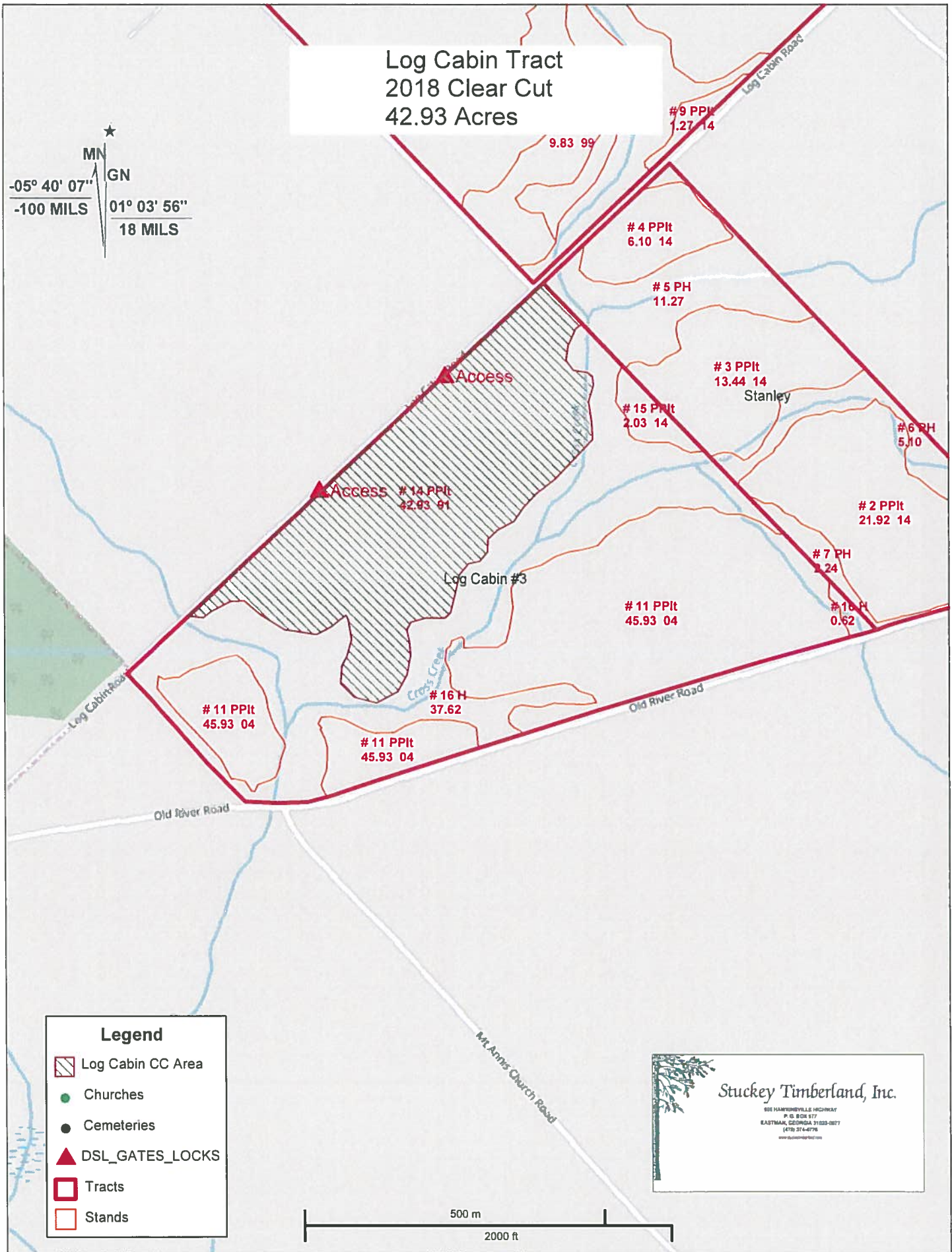
Log Cabin Tract – 43 acres, 40 plots

Cruise Date: 04/06/2018

Pine														
Pine		Total Tract					Average Acre					Average Tree		
Sawtimber	DBH	# Trees	Tons	Cords	DMBF	Cu.Ft.	BA	# Trees	Tons	Cords	DMBF	Cu.Ft.	Sl. CF/Ft	MerchHt
	14	1,009	1,034	369	103	29,911	25.1	24	24	9	2,406	697	0.60	49.8
	16	150	209	75	24	6,045	4.9	4	5	2	0,566	141	0.74	54.1
Sawtimber Total		1,159	1,243	444	128	35,957	30.0	27	29	10	2,973	838	0.62	50.4
Chip-N-Saw	DBH	# Trees	Tons	Cords	DMBF	Cu.Ft.	BA	# Trees	Tons	Cords	DMBF	Cu.Ft.	Sl. CF/Ft	MerchHt
	10	2,307	1,218	435	124	35,232	29.3	54	28	10	2,895	821	0.28	53.6
	12	2,468	2,004	716	197	57,963	45.2	58	47	17	4,581	1,350	0.38	61.1
Chip-N-Saw Total		4,776	3,222	1,151	321	93,195	74.5	111	75	27	7,476	2,171	0.34	57.5
Pulpwood	DBH	# Trees	Tons	Cords	DMBF	Cu.Ft.	BA	# Trees	Tons	Cords	DMBF	Cu.Ft.	Sl. CF/Ft	MerchHt
	6	75	13	4		363	0.3	2	0	0		8	0.00	47.0
	8	601	204	73		5,888	4.9	14	5	2		137	0.00	59.5
	10	129	73	26		2,112	1.6	3	2	1		49	0.00	67.3
	12	64	54	19		1,573	1.2	2	1	0		37	0.00	71.8
	14	21	26	9		739	0.5	1	1	0		17	0.00	76.3
	16	11	16	6		473	0.3	0	0	0		11	0.00	75.8
Pulpwood Total		902	385	138	0	11,147	8.9	21	9	3	0.000	260	0.00	61.0
Pine Total		6,837	4,850	1,732	449	140,299	113.4	159	113	40	10,448	3,268	0.39	56.7
Pine Topwood														
Topwood			258	92					6	2.1				
Pine Total		6,837	5,107	1,824	449	140,299	113.4	159	119	42	10,448	3,268	0.39	56.7
Grand Total		6,837			449	140,299	113.4	159			10,448	3,268	0.39	56.7

Log Cabin Tract
2018 Clear Cut
42.93 Acres

MN
 GN
 -05° 40' 07"
 -100 MILS
 01° 03' 56"
 18 MILS



Legend

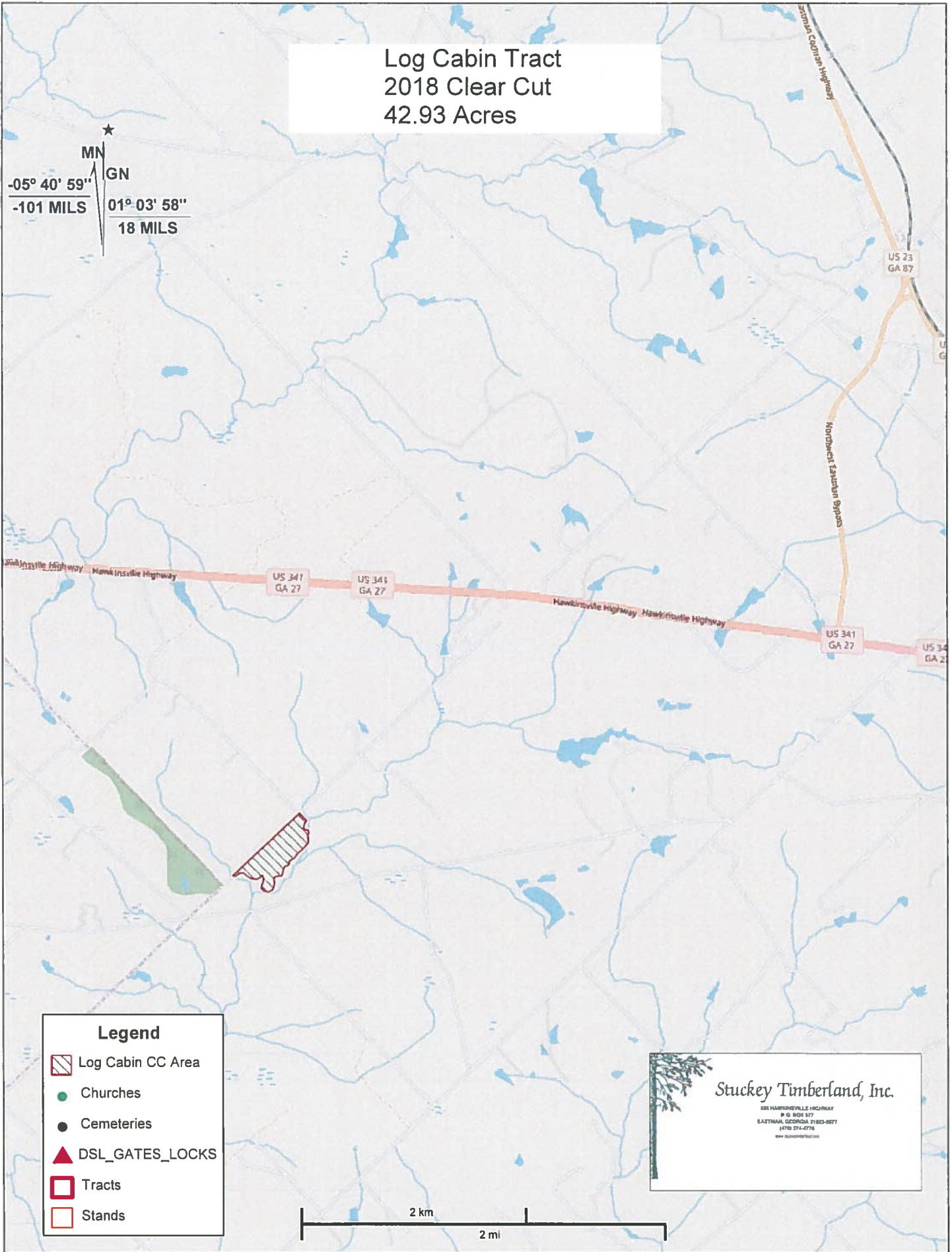
- Log Cabin CC Area
- Churches
- Cemeteries
- DSL_GATES_LOCKS
- Tracts
- Stands

Stuckey Timberland, Inc.
 808 HARRISVILLE HIGHWAY
 P. O. BOX 577
 EASTMAN, GEORGIA 31023-0577
 (478) 254-4778
 www.stuckeytimber.com









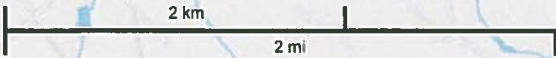
Log Cabin Tract
2018 Clear Cut
42.93 Acres

★
MN
GN
-05° 40' 59"
-101 MILS
01° 03' 58"
18 MILS



Legend

-  Log Cabin CC Area
-  Churches
-  Cemeteries
-  DSL_GATES_LOCKS
-  Tracts
-  Stands



Stuckey Timberland, Inc.
588 HAWKINSVILLE HIGHWAY
 P. O. BOX 577
 BATHMAN, GEORGIA 31823-0577
 (478) 374-4778
 www.stuckeytimber.com