



Stuckey Timberland, Inc.

555 HAWKINSVILLE HIGHWAY
P.O. BOX 577
EASTMAN, GEORGIA 31023-0577
(478) 374-4776
www.stuckeytimberland.com

February 17, 2020

Dear Sir,

Stuckey Timberland, Inc. is soliciting bids on all merchantable timber on the following described property: A stand of timber containing 175 acres, more or less, lying and being a part of the tract or parcel of land containing 2,174 acres, more or less, listed as Map 051, Parcel 001A in Dodge County, Georgia. Attached is a tract map showing the exact location of the timber for sale.

We have made an estimate of the volumes. Our estimate of the volume is:

Pine Pulpwood:	5,074 Tons (includes top wood)
Pine CNS:	7,436 Tons
Pine Sawtimber:	9,633 Tons

Since our reputation is at stake, we tallied the number of trees with utmost care and estimated their volume in accordance with the most prevalent scaling practice in the area. This stand of timber was cruised in the summer of 2018. *The volumes above reflect that cruise with no growth. We are factoring some product shift and some overall growth in our expected minimum price.* Further, we have GPS'd and painted the sale boundaries to represent accurate acres. However, the actual volumes may vary depending on the utilization of each bidder. Logging operations shall be completed in accordance with the Best Management Practices as shown in the Georgia Forestry Commission publications "Recommended Best Management Practices for Forestry in Georgia" and "Best Management Practices for Forested Wetlands in Georgia". All roads and fences must be maintained and restored to original condition when logging is completed. Tops must be kept out of the Restricted Areas. *(There will be a combination lock placed on the gates needed for access 4776)* A period of time of 12 months from closing will be allowed to remove the timber. Please see map

Said timber will be sold **LUMP SUM SEALED BIDS**. Owner reserves the right to reject any or all bids. Bids should be mailed, FAXED (478-374-2048), called in, emailed (ken@stuckeytimberland.com), or taken by Stuckey Timberland, Inc., P.O. Box 577, 555 Hawkinsville Highway, Eastman, Georgia 31023. Bids must be received at this address not later than **10:00 a.m. on Thursday, March 19, 2020**. The successful bidder will be required to enter into a written contract within 30 days of bid opening. A copy of the contract to be used is available upon request. The total payment will be required at the time of closing.

If you have questions concerning this sale, please contact me at 478-374-4776 or 478-290-7500.

Sincerely,
Stuckey Timberland, Inc.



Ken Eason, RF #2881

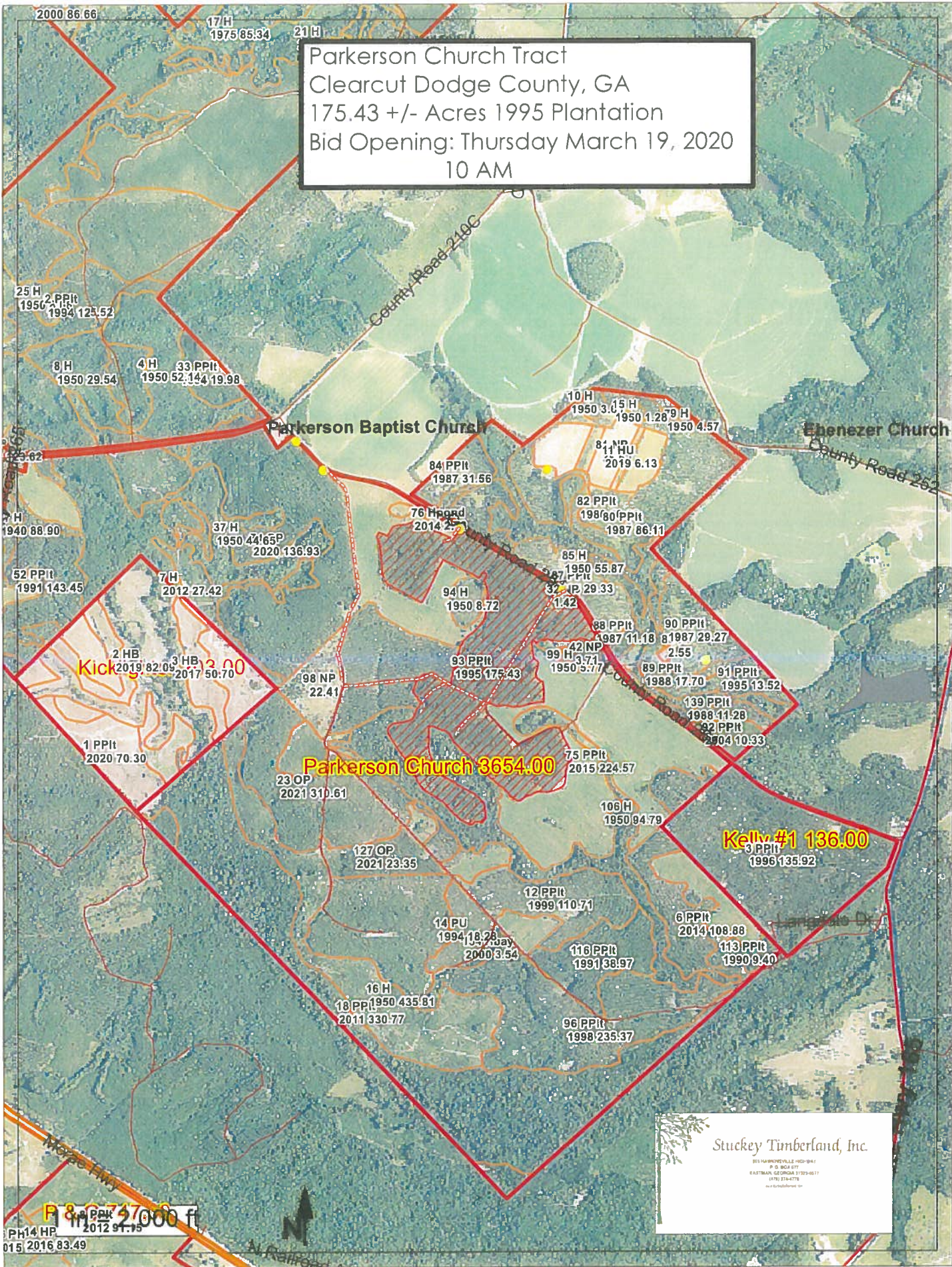
Pine

Pine		Total Tract					Average Acre					Average Tree			
Sawtimber	DBH	# Trees	Tons	Cords	DMBF	Cu.Ft.	BA	# Trees	Tons	Cords	DMBF	Cu.Ft.	SL	CF/ft	MarchHt
	13	3,610	3,171	1,132	301	91,732	19.0	21	18	6	1,718	523	0.54	47.4	
	14	3,031	3,155	1,127	332	91,277	18.5	17	18	6	1,893	520	0.61	49.6	
	15	1,556	1,906	681	216	55,144	10.9	9	11	4	1,230	314	0.68	52.2	
	16	658	963	344	115	27,860	5.2	4	5	2	0,653	159	0.74	57.1	
	17	179	285	102	36	8,244	1.6	1	2	1	0,206	47	0.85	53.7	
	18	40	85	30	11	2,460	0.4	0	0	0	0,062	14	0.87	70.9	
	21	20	20	7	4	592	0.3	0	0	0	0,020	3	1.80	16.5	
	22	20	47	17	8	1,369	0.3	0	0	0	0,046	8	1.70	40.5	
Sawtimber Total		9,114	9,633	3,440	1,023	278,679	56.1	52	55	20	5,829	1,588	0.61	49.8	
Chip-N-Saw	DBH	# Trees	Tons	Cords	DMBF	Cu.Ft.	BA	# Trees	Tons	Cords	DMBF	Cu.Ft.	SL	CF/ft	MarchHt
	9	558	233	83	27	6,748	1.4	3	1	0	0,156	38	0.24	49.6	
	10	1,934	1,058	378	108	30,612	6.0	11	6	2	0,614	174	0.29	54.9	
	11	3,689	2,516	898	237	72,772	13.9	21	14	5	1,349	415	0.34	58.0	
	12	4,268	3,629	1,296	361	104,970	19.1	24	21	7	2,060	598	0.39	63.4	
Chip-N-Saw Total		10,450	7,436	2,656	733	215,101	40.4	60	42	15	4,179	1,226	0.35	59.2	

Product By DBH Report

Pine		Total Tract					Average Acre					Average Tree		
Pulpwood	DBH	# Trees	Tons	Cords	DMBF	Cu.Ft.	BA	# Trees	Tons	Cords	DMBF	Cu.Ft.	SL CF/Ft	MerchHt
	6	20	3	1		98	0.0	0	0	0		1	0.00	47.7
	7	100	25	9		734	0.2	1	0	0		4	0.00	56.3
	8	479	168	60		4,850	1.0	3	1	0		28	0.00	61.7
	9	100	47	17		1,355	0.3	1	0	0		8	0.00	67.4
	10	459	276	99		7,981	1.4	3	2	1		45	0.00	71.6
	11	638	478	171		13,841	2.4	4	3	1		79	0.00	75.6
	12	718	650	232		18,796	3.2	4	4	1		107	0.00	76.8
	13	279	305	109		8,816	1.5	2	2	1		50	0.00	80.7
	14	199	259	92		7,480	1.2	1	1	1		43	0.00	83.4
	15	120	180	64		5,193	0.8	1	1	0		30	0.00	84.8
	16	20	34	12		997	0.2	0	0	0		6	0.00	86.5
Pulpwood Total		3,131	2,425	866	0	70,141	12.1	18	14	5	0.000	400	0.00	73.5
Pine Total		22,695	19,494	6,962	1,756	563,921	108.6	129	111	40	10.008	3,213	0.46	57.4
Pine Topwood														
Topwood			2,649	946					15	5.4				
Pine Total		22,695	22,143	7,908	1,756	563,921	108.6	129	126	45	10.008	3,213	0.46	57.4

Parkerson Church Tract
 Clearcut Dodge County, GA
 175.43 +/- Acres 1995 Plantation
 Bid Opening: Thursday March 19, 2020
 10 AM



Stuckey Timberland, Inc.
 855 HAWKSWOOD DRIVE
 P.O. BOX 677
 EASTMAN, GEORGIA 31025-0677
 (706) 334-4778
 www.stuckeytimber.com

PH14 HP
 015 2016 83.49
 Park #1 27000 ft

Parkerson Church Tract
Clearcut Dodge County, GA
175.43 +/- Acres 1995 Plantation
Bid Opening: Thursday March 19, 2020
10 AM

Access From P.Church RD

Hunt Camp Access
4776

Parkerson Church 3654.00

Turn at Feeder

SMZ's are Pimples in Blue
Landlines are Pimples in Yellow

1 in = 660 ft

Stucky Timberland, Inc.

508 HUNTERSVILLE HIGHWAY
P. O. BOX 577
EASTMAN, GEORGIA 31025-0577
912.614.4776
www.stuckytimber.com

